

Plug-in card module CM-MBF

WinMIOCS Communication (standard application)

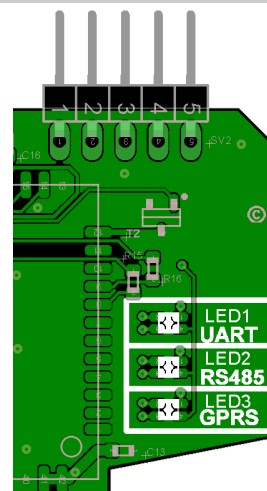
LED 1 UART = Interface to controller via base



flashes **blue**, when data is sent from the controller.



flashes **green**, when data arrives from the server (via GPRS).
(also flashes if there is no internet connection yet, since the status is being transmitted to the controller)



LED 2 RS485 (receipt LED) = field strength display

The middle LED2 uses the color to show how strong the reception is at the moment. The field strength is given on a scale between 0 and 31. 31 is the maximum field strength.

Reception strength and colors:

	OFF	No Signal	Feldstärke 0
	BLUE	Medium strength - sufficient for data transmission	08 - 19
	GREEN	Good signal strength	20 - 31

LED 3 MBF = internet connection



lights up all the time **blue**, when connected to server, but mediocre reception

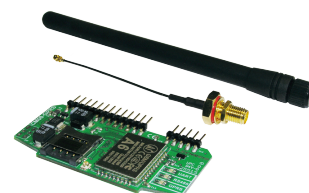


lights up all the time **green**, when connected to server, with good reception

Scope of delivery:

SCHNEID plug-in card module CM-MBF, antenna and 250mm adapter cable.

A mobile data card (SIM card) is not included in the scope of delivery.



SCHNEID Plug-in card module CM-MBF

Order number: 130.14272

Order code: Steckkartenmodul CM-MBF

SCHNEID Antenna for plug-in card module with screw base

Order number: 020.14266

Order code: Antenne für Steckkartenmodul CM08-RFx

SCHNEID antenna adapter cable 500mm

Order number: 250mm: 020.14255
500mm: 020.16196

Order code: Antennen-Adapterkabel 250 für GSM
Antennen-Adapterkabel 500 für GSM

